



The T-Cross

Effective from 01.05.2021



The T-Cross

Petrol

Code	Model Description	Transmission	Trim	Fuel	VRT ¹	Annual Road Tax ¹	HP	Combined CO ₂ (WLTP) ²	Combined I/100km (WLTP) ²	RRP ³	Delivery ³	ROTR*
C112LV	T-CROSS 1.0 TSI 95HP	Manual	T-Cross	Petrol	17.25%	B2 €210	95	131	5.8	€23,410	€850	€24,260
C113LV	T-CROSS LIFE 1.0 TSI 95HP	Manual	Life	Petrol	17.25%	B2 €210	95	132	5.8	€25,355	€850	€26,205
C113FZ	T-CROSS LIFE 1.0 TSI 110HP	Automatic	Life	Petrol	21.00%	C1 €270	110	146	6.4	€28,865	€850	€29,715
C114FX	T-CROSS STYLE 1.0 TSI 110HP	Manual	Style	Petrol	17.25%	B2 €210	115	132	5.8	€27,500	€850	€28,350
C114FZ	T-CROSS STYLE 1.0 TSI 110HP	Automatic	Style	Petrol	21.00%	C1 €270	110	146	6.4	€30,200	€850	€31,050
C114FX	T-CROSS R-LINE 1.0 TSI 110HP	Manual	R-Line	Petrol	17.25%	B2 €210	115	132	5.8	€28,745	€850	€29,595
C114FZ	T-CROSS R-LINE 1.0 TSI 110HP	Automatic	R-Line	Petrol	19.50%	C1 €270	110	145	6.4	€30,970	€850	€31,820

¹VRT Bands and rate of Annual Road Tax are valid as of 1st January 2021 and calculated from the base model WLTP values for model year 2021 cars produced from CW48/2020 until CW17/2021. All vehicles with TBC are subject to EU type approval and with that were not available at time of going to print.

²The specified fuel consumption and emission values are the official figures obtained from tests under standardised EU test conditions in accordance with the Worldwide Harmonized Light Vehicles Test Procedure (WLTP). The above values reflect the standard vehicle excluding additional equipment such as optional extras and accessories which may have an effect on the fuel consumption (l/100km) and CO₂ emissions produced. To discover exact values please configure your desired vehicle at volkswagen.ie/build. You can discover more about the WLTP at volkswagen.ie/wltp.

³All prices (Retail, Delivery and ROTR) are recommended by Volkswagen Ireland.

*Recommended On the Road Price.

Note, the prices and optional extras listed in this product guide are for T-Cross models produced under MY2021 until CW17/2021. Limitations on available configurations therefore may exist. For more information please contact your local Authorised Volkswagen retailer.

Importantly note that the rate at which your vehicle pays Vehicle Registration Tax may increase as a result of your vehicle configuration. For more information, please consult your local Authorised Volkswagen retailer.

In accordance with (EU) 2020/740 ("Tire Labeling Regulation"), please visit volkswagen.ie configurator for details relating to the tyres applicable to said vehicles.

Please note every effort has been made to ensure the contents of this publication (including RRP, CO₂, fuel consumption and technical information) were accurate and up-to-date at the time of going to print 1st May 2021. Volkswagen Ireland reserves the right to change specification, prices and withdraw products from sale without notice. Any such alternations will be notified to Volkswagen Retailers at the earliest opportunity. Please consult your local Authorised Volkswagen retailer for the latest product information.

T-Cross

Interior Equipment

- » Multifunction steering wheel
- » Instrument cluster with electronic speedometer, odometer, trip counter and tachometer
- » Fabric seat coverings in 'Basket' design
- » Decorative inserts in 'Softell' design
- » Power windows, front and rear
- » Front seats with height adjustment
- » Reading light in front and rear
- » Manual handbrake lever in plastic
- » Gearshift knob in plastic
- » Dimming rear view mirror
- » Standard pedal cluster
- » Sun visors with ticket pocket on driver side
- » Side and rear windows in heat insulating glass
- » Floor mats
- » Manually adjusted Lumbar support front seats
- » Luggage compartment lighting

Exterior Equipment

- » 16" Dublin steel wheels
- » LED daytime running lights
- » LED tail lamp assembly
- » Power-adjustable and heated exterior mirrors
- » Body-coloured exterior mirror housings
- » Halogen headlamps with turn signal lamps in one clear lens
- » Rear window wiper and washer system with intermittent control

Functional Equipment

- » 6.5" 'Composition Colour' radio system with 2 speakers
- » Digital radio reception
- » USB-C interface
- » Manual air conditioning
- » Lane keeping system 'Lane Assist'
- » Forward collision warning 'Front Assist' with autonomous emergency braking
- » Hillstart assist
- » Automatic headlight control with separate daytime running light and 'Coming Home' feature
- » Start/stop system with regenerative braking
- » Two-tone horn
- » Windshield wiper with intermittent control and light sensor
- » Central locking system, 2 remote keys
- » Headlight range control
- » Pedestrian monitoring
- » Multifunction display
- » We Connect (1 year subscription)
- » eCall (Emergency call button)
- » Speed limiter
- » Mobile phone interface (bluetooth)
- » Tyre Mobility Kit
- » Antenna for AM/FM reception

Safety

- » Warning triangle
- » Driver and front passenger airbag with front passenger airbag deactivation
- » Curtain airbag system for front and rear passenger incl. side airbags in front
- » ESC (Electronic Stability Control) with driver steering recommendation, ABS, ASR, EDL,EDTC, and trailer stabilisation
- » Shock absorption suspension system in front and rear
- » Pedestrian protection
- » Luggage compartment lighting
- » 3 head restraints in rear
- » 3-point seat belts in front with height adjustment and seat belt pretensioner
- » Three 3-point seat belts in rear
- » Electromechanical speed-sensitive power steering
- » Warning signal and warning light for front and rear seat belts not fastened
- » Safety optimised front head restraints with three rear head restraints
- » Direct tire pressure monitoring system
- » 3 year warranty



The above specifications are for information purposes only as our products are continually updated and changes may be made to the specifications at any time. If you require any specific feature, you must consult your local dealer who is regularly updated with any change in specification. Specifications are subject to change without notice.

T-Cross Life (in addition to T-Cross)

Interior Equipment

- » Leather wrapped multifunction steering wheel
- » Fabric seat coverings in 'Triangle Ties' design
- » Decorative inserts in 'Pineapple' design
- » Manual handbrake lever in leather
- » Leather wrapped gearshift knob
- » Map pockets on backrest
- » Glove compartment door with light
- » Adjustable centre armrest in front
- » Sun visors with vanity mirror
- » Drawer under right front seat

Exterior Equipment

- » 16" Belmont alloy wheels
- » Black roof rails
- » Front fog lights incl. static cornering light
- » Body coloured bumpers

Functional Equipment

- » 8" 'Ready to Discover' radio system with 8 speakers incl. streaming & internet
- » Adaptive Cruise Control incl. speed limiter
- » Climatronic air conditioning
- » Wireless App Connect
- » Voice control
- » 2 USB-C interfaces



The above specifications are for information purposes only as our products are continually updated and changes may be made to the specifications at any time. If you require any specific feature, you must consult your local dealer who is regularly updated with any change in specification. Specifications are subject to change without notice.

T-Cross Style (in addition to Life)

Interior Equipment

- » Sport comfort seats in front
- » Fabric seat coverings in 'Hexalink' design
- » Decorative inserts in 'Lizard' design
- » Interior ambient lighting
- » Interior light in footwell
- » LED reading lights in front

Exterior Equipment

- » 17" Bangalore alloy wheels
- » LED headlights
- » LED tail lamp with special styling
- » Tinted rear windows
- » Bumper with chrome molding
- » Silver-anodised roof rails
- » Chrome plated moldings with chrome molding in door cover

Functional Equipment

- » Park distance control front and rear
- » Dynamic headlight range control
- » Chrome Package
- » Driver Alert System
- » Power folding mirrors
- » Lights & Vision package
- » Extended protection lockable wheel bolts



The above specifications are for information purposes only as our products are continually updated and changes may be made to the specifications at any time. If you require any specific feature, you must consult your local dealer who is regularly updated with any change in specification. Specifications are subject to change without notice.

T-Cross R-Line (in addition to Style)

Exterior Equipment

- » 17" Sebring alloy wheel
- » 'R-Line' front and rear bumpers incl. 'R-Line' side skirt
- » Radiator grille with 'R-Line' logo
- » 'R-Line' badging on sides
- » Exhaust pipe in grained black design including splitter
- » Black wheel housing flarings



T-Cross R-Line (optional equipment)

Interior Equipment

- » Fabric seat coverings in 'R-Line' design incl. 'R-Line' logo embossed on seat
- » 'R-Line' specific perforated leather multifunction steering wheel (DSG models gain gear shift paddles on steering wheel)
- » Pedal cluster in aluminium look
- » Decorative inserts in 'R-Line' Race style
- » Black headliner
- » 'R-Line' scuff plates in door sills
- » 'R-Line' style carpet mats front and rear



Images show optional interior equipment and 18" Nevada alloy wheel.



Images show optional interior equipment and 18" Nevada alloy wheel.



The above specifications are for information purposes only as our products are continually updated and changes may be made to the specifications at any time. If you require any specific feature, you must consult your local dealer who is regularly updated with any change in specification. Specifications are subject to change without notice.

T-Cross Design Pack

Exterior Equipment

- » 18" Köln alloy wheels painted in Design Pack colour (Black / Energetic Orange / Bamboo Garden) for Style & R-Line
- » Exterior mirror housings in Design Pack Colour (Black / Energetic Orange / Bamboo Garden)
- » Tinted rear windows

Interior Equipment

- » Unique dashpad design 'Transition' in Design Pack colours (Energetic Orange & Grey / Black & Grey). See page 14 for details
- » Fabric seat coverings in unique 'Diag' design in Design Pack colours (see page 13 for details)
- » Leatherette on outer part of seats and headrests
- » Centre console in Design Pack colour (Black / Energetic Orange)
- » Steering wheel clasp in Design Pack colour (Black / Energetic Orange)



Design Pack: Energetic Orange



Design Pack: Black



Design Pack: Bamboo Garden



The above specifications are for information purposes only as our products are continually updated and changes may be made to the specifications at any time. If you require any specific feature, you must consult your local dealer who is regularly updated with any change in specification. Specifications are subject to change without notice.

Option Packs

The addition of optional extras may result in the vehicle increasing in Co2 g/km and therefore, attracting a higher rate of VRT than described in this product guide. **For your exact configuration value, both Co2 g/km and RRP, please visit volkswagen.ie configurator.**

Options Priced
From RRP

W67 Technology Upgrade (Life)

€500

PLA	LIGHTS & VISION PACKAGE	Auto-dimming interior rearview mirror. Leaving home and manual coming home feature. Rain sensor. Automatic headlight control
-----	-------------------------	--

7X2	PARK DISTANCE CONTROL FRONT AND REAR	Visual and audio warning for obstacles in front and rear
-----	--------------------------------------	--

6YD	MIRROR PACKAGE	Power-adjustable, folding and heated exterior mirrors with front passenger exterior mirror lowering function
-----	----------------	--

W68 Technology Upgrade (Style & R-Line)

€801

RBD	'DISCOVER MEDIA' INCL. STREAMING & INTERNET NAVIGATION SYSTEM	Navigation system with 8" clear glass touch screen incorporating streaming and internet and dynamic road sign display
-----	---	---

KA1	REAR VIEW CAMERA	Rear view camera as parking aid
-----	------------------	---------------------------------

WW1	WINTER PACKAGE	Heated front seats, warning light for washer fluid level and automatically heated washer nozzles in front
-----	----------------	---

The addition of optional extras may result in the vehicle increasing in Co2 g/km and therefore, attracting a higher rate of VRT than described in this product guide. **For your exact configuration value, both Co2 g/km and RRP, please visit volkswagen.ie configurator.**

For exact options prices for your vehicle, please contact your local dealer or visit www.volkswagen.ie

Options

The addition of optional extras may result in the vehicle increasing in Co2 g/km and therefore, attracting a higher rate of VRT than described in this product guide. **For your exact configuration value, both Co2 g/km and RRP, please visit volkswagen.ie configurator.**

Driver Assistance Systems

			T-Cross	Life	Style	R-Line	Options Priced From RRP
7X5	PARALLEL 'PARK ASSIST'	Parallel parking assistant "Park Assist" including Park Distance Control for front and rear.	–	–	○	○	€172
KA1	REAR VIEW CAMERA	Rear view camera as parking aid.	–	○	○	○	€324
7X2	PARK DISTANCE CONTROL	Visual and audio warning for obstacles in front and rear.	○	○	■	■	€569
8G1	HIGH BEAM CONTROL 'LIGHT ASSIST'	Automatic activation and deactivation of the main light beam.	–	–	○	○	€178
PES	PROACTIVE PASSENGER PROTECTION SYSTEM	Pre-crash with Restraint system	–	○	○	○	€177
7Y9	BLIND SPOT MONITOR	Blind spot monitor with Rear traffic alert	–	○	○	○	€360
PLA	LIGHTS AND VISION PACKAGE	Auto-dimming interior rearview mirror. Leaving home and manual coming home feature. Rain sensor. Automatic headlight control.	○	○	■	■	€149

Functional

			T-Cross	Life	Style	R-Line	Options Priced From RRP
1D2	TRAILER HITCH	Removable trailer hitch	○	○	○	–	€895
6YD	FOLDING MIRRORS	Power adjustable, folding and heated exterior mirrors with front passenger exterior mirror lowering function.	–	○	■	■	€196
WD1	ANTI-THEFT ALARM PLUS	Anti-theft alarm system with interior monitoring, backup horn, and towing protection. Incl. central locking system with SAFELOCK.	–	○	○	○	€347
8WH	FRONT FOG LIGHTS	Incl. static cornering light.	○	■	■	■	€219
9ZV	WIRELESS CHARGING	Wireless smartphone charging in the storage compartment in front of gearstick. Only for Qi-enabled devices.	–	○	○	○	€138
4I3	KEYLESS ACCESS	Keyless access without SAFELOCK.	–	–	○	○	€434
9S0	DIGITAL COCKPIT PRO	High resolution 10.25" screen replacing the conventional speedometer and allows for multiple views	–	○	○	○	€462

The addition of optional extras may result in the vehicle increasing in Co2 g/km and therefore, attracting a higher rate of VRT than described in this product guide. **For your exact configuration value, both Co2 g/km and RRP, please visit volkswagen.ie configurator.**

For exact options prices for your vehicle, please contact your local dealer or visit www.volkswagen.ie

■ Standard ○ Optional – Not available

Note: Some options may require other options depending on the item and trim line.

Options (continued)

The addition of optional extras may result in the vehicle increasing in Co2 g/km and therefore, attracting a higher rate of VRT than described in this product guide. For your exact configuration value, both Co2 g/km and RRP, please visit volkswagen.ie configurator.

Comfort			T-Cross	Life	Style	R-Line	Options Priced From RRP
WW1	WINTER PACK	Heated front seats, warning light for washer fluid level and automatically heated washer nozzles in front.	–	○	○	○	€382
PU3	LEATHER MULTIFUNCTION STEERING WHEEL WITH GEARSHIFT CONTROL	Enables control of gearshift, multifunction display, radio and telephone via steering wheel Note: Only available on DSG models	–	○	○	○	€91

Styling			T-Cross	Life	Style	R-Line	Options Priced From RRP
4KF	TINTED REAR WINDOWS		–	○	■	■	€219
WII	R-LINE INTERIOR	Seat trim covers in R-Line fabric. Chrome package, ambient lighting, sports comfort seats in front, aluminium look pedal cluster, carpet mats in front and rear in R-Line design, R-Line bumpers, hand brake lever handle and gearshift knob in leather, scuff plates in door apertures, 2 reading lights in front, R-Line leather multifunction sports steering wheel and black headliner Note: Requires PJ2 18" Nevada alloy wheels Note: DSG models gain gear shift paddles on steering wheel	–	–	–	○	€774 <i>Note: Manual engine only</i>
			–	–	–	○	€882 <i>Note: DSG model only</i>
3S2	BLACK ROOF RAILS		○	■	–	–	€207
PAD	DESIGN PACK 'BLACK' FOR STYLE & R-LINE	See page 7 for details	–	–	○	–	€351
			–	–	–	○	€251
PAE	DESIGN PACK 'ENERGETIC ORANGE' FOR STYLE & R-LINE	See page 7 for details	–	–	○	–	€351
			–	–	–	○	€251
PAF	DESIGN PACK 'BAMBOO GARDEN' FOR STYLE & R-LINE	See page 7 for details	–	–	○	–	€351
			–	–	–	○	€251

The addition of optional extras may result in the vehicle increasing in Co2 g/km and therefore, attracting a higher rate of VRT than described in this product guide. For your exact configuration value, both Co2 g/km and RRP, please visit volkswagen.ie configurator.

For exact options prices for your vehicle, please contact your local dealer or visit www.volkswagen.ie

■ Standard ○ Optional – Not available

Note: Some options may require other options depending on the item and trim line.

Options (continued)

The addition of optional extras may result in the vehicle increasing in Co2 g/km and therefore, attracting a higher rate of VRT than described in this product guide. For your exact configuration value, both Co2 g/km and RRP, please visit volkswagen.ie configurator.

Audio and Navigation			T-Cross	Life	Style	R-Line	Options Priced From RRP
RBD	NAVIGATION SYSTEM 'DISCOVER MEDIA'	Navigation system with 8" clear glass touch screen incorporating streaming and internet and dynamic road sign display	–	○	○	○	€654
9IJ	MOBILE PHONE INTERFACE 'COMFORT'	Incl. wireless smartphone charging in the storage compartment in front of gearstick. Only for Qi-enabled devices.	–	○	○	○	€539

Alloys			T-Cross	Life	Style	R-Line	Options Priced From RRP
PJI	16" ROCHESTER ALLOY WHEELS	6J x 16 'Rochester' alloy wheels with wheel locks and extended anti-theft protection. 205/60 R16 with low rolling resistance tyres.	○	–	–	–	€696
			–	○	–	–	€167
PJG	18" KÖLN ALLOY WHEELS	7J x 18 'Köln' alloy wheels in black diamond-turned surface, with wheel locks and extended anti-theft protection. 215/45 R18 tyres.	–	–	○	–	€395
			–	–	–	○	€266
PJ2	18" NEVADA ALLOY WHEELS	7J x 18 'Nevada' alloy wheels in black with diamond-turned surface, with wheel locks and extended antitheft protection. 215/45 R18 tyres.	–	–	○	–	€524
			–	–	–	○	€395

Paint			T-Cross	Life	Style	R-Line	Options Priced From RRP
MP0	SOLID PAINT- FREE	Urano Grey	○	○	○	–	€0
MP9	SOLID PAINT	Pure White, Flash Red	○	○	○	○	€182
MP1	METALLIC PAINT	Limestone Grey, Reflex Silver, Energetic Orange, Reef Blue	○	○	○	○	€725
MP2	PREMIUM METALLIC PAINT	Makena Turquoise	○	○	○	○	€724
MP7	PEARL EFFECT PAINT	Deep Black	○	○	○	○	€725

The addition of optional extras may result in the vehicle increasing in Co2 g/km and therefore, attracting a higher rate of VRT than described in this product guide. For your exact configuration value, both Co2 g/km and RRP, please visit volkswagen.ie configurator.

For exact options prices for your vehicle, please contact your local dealer or visit www.volkswagen.ie

■ Standard ○ Optional – Not available

Note: Some options may require other options depending on the item and trim line.

Colours



Urano Grey Solid 5K5K
Note: not available with R-Line



Pure White Solid * 0Q0Q



Flash Red Solid * D8D8
Note: not available with R-Line



Reef Blue Metallic * 0A0A



Limestone Grey Metallic * Z1Z1



Reflex Silver Metallic * 8E8E



Energetic Orange Metallic * 4M4M



Deep Black Pearl Effect * 2T2T



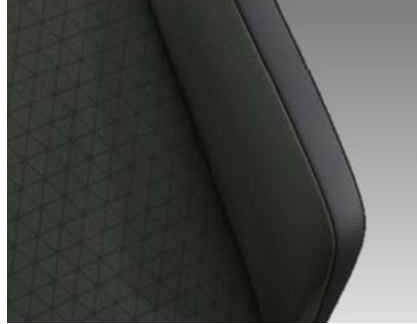
Makena Turquoise Premium Metallic * 0Z0Z

*Optional at extra cost • Please see Options section for pricing information.

Upholstery



"Basket" Cloth
Platinum Grey (EL)
Standard on T-Cross



"Triangle Ties" Cloth
Platinum Grey (UL)
Standard on Life



"Hexalink" Cloth
Pearl Grey (FL)
Standard on Style & R-Line



"Diag" (Design Pack Black)
Neutral/Titan Black Cloth (UL)
Optional on Style & R-Line



"Diag" (Design Pack Energetic Orange)
Orange/Ceramique Cloth (GL)
Optional on Style & R-Line



"Diag" (Design Pack Bamboo Garden)
Makena Turquoise - Orange/Platinum
Grey Cloth (DL)
Optional on Style & R-Line



"Carbon Flag" Cloth (R-Line Interior)
Crystal Grey (OK)
Optional on R-Line

Dashpads



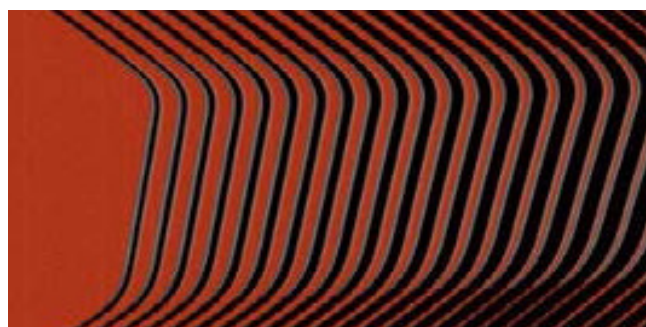
Softell
Standard on T-Cross



Pinapple
Standard on Life



Lizard
Standard on Style & R-Line



Transition - Energetic Orange & Grey
Optional on Style & R-Line
(Design Pack Energetic Orange)



Transition - High-gloss Black & Grey
Optional on Style & R-Line
(Design Pack Black & Design Pack Bamboo Garden)



Race
Optional on R-Line
(R-Line Interior)

Colour and Fabric Combinations

	Dashboard Pads/ Door cards	Centre Console	Door Card	Mirror Housings	Urano Grey Solid (5K5K)	Pure White Solid* (0Q0Q)	Flash Red Solid* (D8D8)	Reflex Silver Metallic* (8E8E)	Limestone Grey Metallic* (Z1Z1)	Reef Blue Metallic* (0A0A)	Energetic Orange Metallic* (4M4M)	Deep Black Pearl Effect Metallic* (2T2T)	Makena Turquoise Premium Metallic* (0Z0Z)
T-Cross (Standard)													
"Basket" Platinum Grey Cloth	EL Softell	Soft black/ grained	Soft Black	Body colour	□ ¹	□	□	□	□	□	□	□ ¹	□
Life (Standard)													
"Triangle Ties" Platinum Grey Cloth	UL Pineapple	Matte black	Pineapple	Body colour	□ ¹	□	□	□	□	□	□	□ ¹	□
Style (Standard)													
"Haxalink" Pearl Grey Cloth	FL Lizard	High gloss shadow steel	Lizard	Body colour	□ ¹	□	□	□	□	□	□	□ ¹	□
R-Line (Standard)													
"Haxalink" Pearl Grey Cloth	FL Lizard	High gloss shadow steel	Lizard	Body colour	-	□	-	□	□	□	□	□ ¹	□
Life, Style & R-Line (Optional)*													
"Diag" Neutral/ Titan Black (Design Pack Black)	UL Transition (High gloss black/ grey)	High gloss black	Transition	Black	□	□	□	□	□	□	□	□	□
"Diag" Orange/ Ceramique (Design Pack Energetic Orange)	GL Transition (Energetic orange/ grey)	Energetic orange metallic	Transition	Energetic Orange	□	□	-	□	□	-	□	□	-
"Diag" Makena Turquoise- Orange/ Platinum Grey (Design Pack Bamboo Garden)	DL Transition (High gloss black/ grey)	High gloss black	Transition	Bamboo Garden	□	□	-	□	□	-	-	□	-
R-Line (Optional)*													
"Carbon Flag" Crystal Grey (R-Line Interior)	OK Race	High gloss black/ Shadow steel	Race	Body colour	-	□	-	□	□	□	□	□ ¹	□

- Not available □ available ¹Note: Mirror housings in black • *Optional at extra cost

Alloy Wheels

The addition of optional extras may result in the vehicle increasing in Co2 g/km and therefore, attracting a higher rate of VRT than described in this product guide. For your exact configuration value, both Co2 g/km and RRP, please visit volkswagen.ie configurator.



STANDARD ON T-CROSS
16" Dublin steel wheels
6J X 16 Tyres: 205/60 R16



STANDARD ON LIFE
16" Belmont alloy wheels
6J X 16 Tyres: 205/60 R16



STANDARD ON STYLE
17" Bangalore alloy wheels
6J X 17 Tyres: 205/55 R17



STANDARD ON R-LINE
17" Sebring alloy wheels
6.5J X 17 Tyres: 205/55 R17



OPTIONAL ON T-CROSS & LIFE
16" Rochester alloy wheels
6J X 16 Tyres: 205/60 R16



OPTIONAL ON STYLE & R-LINE
18" Nevada alloy wheels with
burnished finish
7J X 18 Tyres: 215/45 R18

The addition of optional extras may result in the vehicle increasing in Co2 g/km and therefore, attracting a higher rate of VRT than described in this product guide. For your exact configuration value, both Co2 g/km and RRP, please visit volkswagen.ie configurator.

Design Pack Alloy Wheels

The addition of optional extras may result in the vehicle increasing in Co2 g/km and therefore, attracting a higher rate of VRT than described in this product guide. **For your exact configuration value, both Co2 g/km and RRP, please visit volkswagen.ie configurator.**



**OPTIONAL ON STYLE & R-LINE
DESIGN PACK ENERGETIC ORANGE**

18" Köln alloy wheels in Energetic Orange
7J X 18 Tyres:215/45 R18



**OPTIONAL ON STYLE & R-LINE
DESIGN PACK BAMBOO GARDEN**

18" Köln alloy wheels in Bamboo Garden
7J X 18 Tyres:215/45 R18



**OPTIONAL ON STYLE & R-LINE
DESIGN PACK BLACK**

18" Köln alloy wheels in Black with
burnished finish
7J X 18 Tyres:215/45 R18

The addition of optional extras may result in the vehicle increasing in Co2 g/km and therefore, attracting a higher rate of VRT than described in this product guide. **For your exact configuration value, both Co2 g/km and RRP, please visit volkswagen.ie configurator.**

Technical Data

Engine	1.0 TSI 95HP ¹	1.0 TSI 110HP ¹	
Gearbox type	5 speed manual	6 speed manual	7 speed auto DSG
Engine type	Petrol	Petrol	Petrol
Fuel tank capacity, ltrs	40	40	40
Cubic capacity, ltrs/cc	999	999	999
Max. output, kW/HP	70/95	81/110	81/110
Max. torque, Nm	175	200	200
Performance			
Top speed, km/h, where the law permits:	180	189	189
Acceleration, secs 0 – 100km/h:	11.5	9.9	9.9
Environmental information			
Official fuel consumption ltr per 100km:			
WLTP: (Min-Max)			
Low	7.0 - 7.2	7.3 - 7.4	7.8 - 8.1
Medium	5.5 - 5.9	5.6 - 5.8	6.3 - 6.6
High	5.0 - 5.3	5.0 - 5.2	5.6 - 5.9
Extra High	6.1 - 6.4	6.2 - 6.4	6.7 - 6.9
Combined	5.8 - 6.1	5.8 - 6.0	6.4 - 6.7
WLTP Emissions Combined, CO ₂ g/km:	131 - 138	132 - 137	145 - 152
Emission class	EURO 6 AP		EURO 6 AP

¹VRT Bands and rate of Annual Road Tax are valid as of 1st January 2021 and calculated from the base model WLTP values for model year 2021 cars produced from CW48/2020 until CW17/2021. All vehicles with TBC are subject to EU type approval and with that were not available at time of going to print.

The specified fuel consumption and emission values are the official figures obtained from tests under standardised EU test conditions in accordance with the Worldwide Harmonized Light Vehicles Test Procedure (WLTP). The above values reflect the standard vehicle excluding additional equipment such as optional extras and accessories which may have an effect on the fuel consumption (l/100km) and CO₂ emissions produced. To discover exact values please configure your desired vehicle at volkswagen.ie/build. You can discover more about the WLTP at volkswagen.ie/wltp.

Importantly note that the rate at which your vehicle pays Vehicle Registration Tax may increase as a result of your vehicle configuration. For more information, please consult your local Authorised Volkswagen retailer.

Please note every effort has been made to ensure the contents of this publication (including RRP, CO₂, fuel consumption and technical information) were accurate and up-to-date at the time of going to print 1st May 2021. Volkswagen Ireland reserves the right to change specification, prices and withdraw products from sale without notice. Any such alternations will be notified to Volkswagen Retailers at the earliest opportunity. Please consult your local Authorised Volkswagen retailer for the latest product information.